



**Oberg Industries**  
PASSION FOR PRECISION MANUFACTURING

# METAL PACKAGING

**A TRUSTED SUPPLIER FOR HIGH-QUALITY BEVERAGE,  
FOOD AND SPECIALTY CAN TOOLING**

Since 1948, Oberg has partnered with leading **metal packaging** manufacturers and OEMs to create custom tooling unmatched for quality, design, and longevity.

Our high-precision, **metal packaging** tooling offers superior quality to resist damage, minimize maintenance and deliver the longest wear in the industry – so you can increase productivity and reduce costs.

## PRODUCTS

Copper Tooling

Bodymaker Punches

Necker Tooling

Shell Tooling

Draw/Redraw Tooling

End Tooling

Score Tooling

Curler Tooling

Scroll Dies

Rivet & Tab Tooling

Specialty Can Tooling

Repair/Service Programs

Two-Piece Can Tooling

Three-Piece Can Tooling



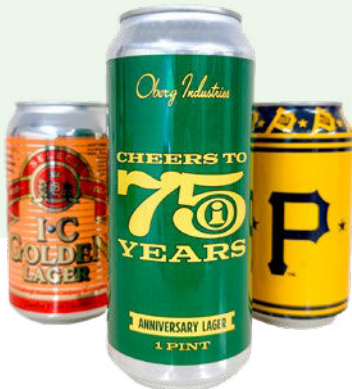


## BEVERAGE CAN TOOLING

In the fast-paced world of beverage can manufacturing, efficiency, durability, and precision are non-negotiable. Oberg Industries is a trusted partner in delivering high-performance beverage can tooling, supporting some of the world's leading can manufacturers and equipment suppliers. We specialize in manufacturing precision tooling for every stage of the can production process, ensuring consistent quality, reduced downtime, and extended tool life. Whether you're producing millions of standard beverage cans or innovating with unique designs, our collaborative approach and manufacturing expertise provide the reliability you need to keep your lines running at peak efficiency.

## FOOD CAN TOOLING

Food Can Tooling is essential for high-quality food packaging, and Oberg Industries delivers industry-leading solutions. In food can manufacturing, consistent quality and long-lasting performance are paramount. Leveraging 77+ years of manufacturing expertise, Oberg Industries provides Food Can Tooling solutions that withstand the demands of high-speed, high-volume production. From shaping durable can bodies to ensuring precision in easy-open ends, our advanced tooling materials and innovative designs minimize downtime, enhance efficiency, and support flawless container integrity for a wide range of food packaging applications.





## SPECIALTY CAN TOOLING

While Oberg Industries is a trusted name for food and beverage can tooling, we are equally proficient in producing some of the finest specialty can tooling available. Our capabilities extend to unique possibilities, including non-round cans, aerosol cans, F-style cans, specialty holiday tins, gas cans, and custom container lids. These examples represent just a portion of our capabilities, reflecting our commitment to delivering precision and reliability for even the most complex designs and production requirements.



## CAPABILITIES

### Machining/Turning/EDM

- Multi-Axis Milling
- Turning
- Mill/Turn
- EDM Wire and Sinker
- Swiss turn
- Hard Turning Lathes

### Precision Grinding

- Wave Shear Grinding
- Surface / Centerless
- Jig / Advanced MDP®
- Lapping
- OD/ID

### Tooling + Stamping

- Carbide Primary and Secondary Scroll Dies
- Tooling Rework Programs

### Special / Secondary Processes

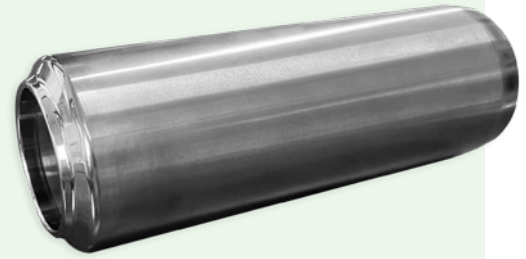
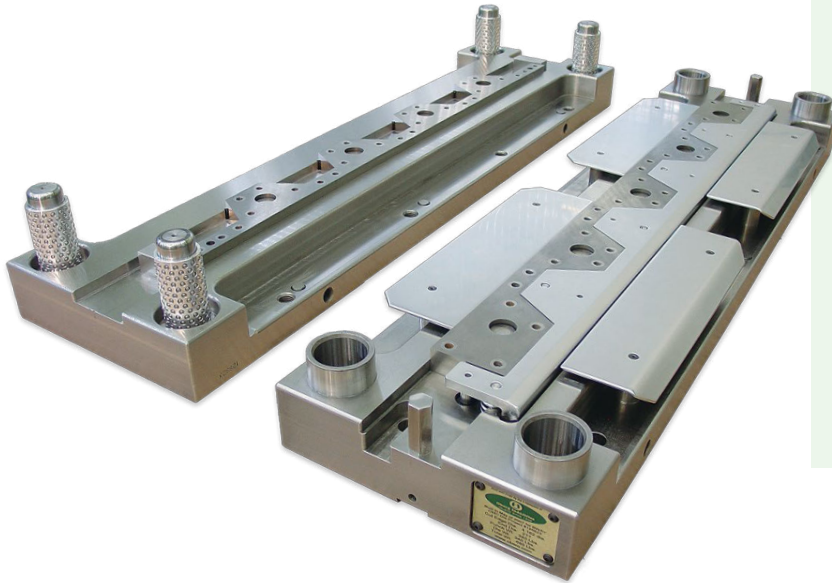
- Heat Treating + Cryogenics
- Welding (Laser + TIG)
- Electropolish
- Lapping, Deburring





## MATERIALS

Tungsten Carbide (Nickel, Cobalt)  
Alloy Steel (Stainless, Nickel, Tool Steel)  
Carbon Steel  
Ceramics  
Aluminum  
Powdered Tool Steels (CPM, M4, ASP)



FOUNDED  
**1948** By Don Oberg

SKILLED EMPLOYEES  
**750+**

MANUFACTURING SPACE  
**450,000+** SQUARE FEET

HEADQUARTERS  
**Freeport, Pennsylvania**

MANUFACTURING FACILITIES  
**Pennsylvania**  
**Illinois**  
**Connecticut**

INTERNATIONAL SALES OFFICE  
**Germany**



Oberg Industries is a global contract manufacturer producing precision machined and stamped metal components, tooling and assemblies for some of the world's most recognized companies. Through ingenuity and collaboration, we develop unique solutions to give you a competitive advantage with improved precision, efficiency and output.

2301 Silverville Rd  
Freeport, PA 16229  
+1-724-295-2121  
[inquire@oberg.com](mailto:inquire@oberg.com)

[www.oberg.com](http://www.oberg.com)



### CERTIFICATIONS

ISO 9001:2015  
AS 9100 D  
ISO 13485:2016  
FDA registered  
ITAR compliant

**PROUD TO BE MADE IN THE USA**

EOE, including disability/vets