



PASSION FOR PRECISION MANUFACTURING

www.oberg.com

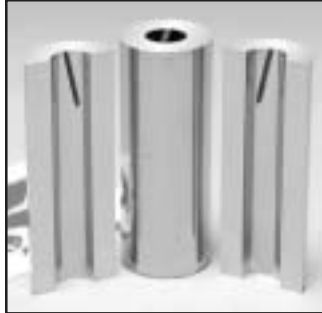
CARBIDE PUNCHES & DIE INSERTS METRIC PRECISION LINE CATALOG



Oberg Slug Retention

Reduce Excessive Manufacturing Costs Associated With Slug Pulling In Your Stamping Operations

Downtime, broken die components and rejected parts can be extremely costly. Oberg's Slug Retention process can solve those nagging problems by reducing the risk of slugs being pulled to the die surface during withdrawal of the punch.



Slug Retention can be used on carbide bushings or die sections with counterbore, tapered or strait I.D. styles, in rounds and most shapes.



Our Method Is User Friendly

Because our process is based on your application, no redesigning of your current tooling is required. This process is very dependable and can be

precisely duplicated each time a component needs to be replaced.

Performance Is Guaranteed

Our Slug Retention method will totally eliminate or greatly reduce your slug pulling difficulties. Test our proven system and receive this guarantee: **Use Oberg Slug Retention and if you are not completely satisfied, we will refund the full cost of the Slug Retention alteration. (This guarantee is limited to only round shapes with inside diameters greater than 0.040").**

What It Does

Oberg Slug Retention is a solution for controlling slugs in carbide die bushings or die sections. This process places an exact amount of trap on the slug to maintain a smooth, even flow of slugs away from the working area of the die. Slug Retention is user friendly and requires no redesigning of your tooling and no special drawings.

How It Works

With our Slug Retention method, a series of carefully calculated interference points are produced on the slug that help to eliminate slug pulling. A precise amount of interference is applied to the blanked slug so that vacuum forces will not pull it back into the work area. The slug expands into a series of special grooves manufactured in the die bushing or die section effectively retaining the slug. These grooves are engineered to prevent the slug from pulling back onto the die face where damage can occur.

Features & Benefits

Eliminates or reduces the following:

- Punch breakage due to double hits
- Use of ejector punches or air holes
- Slug marks on parts
- Press downtime
- Wasted material
- Die maintenance
- New die development

How to Order

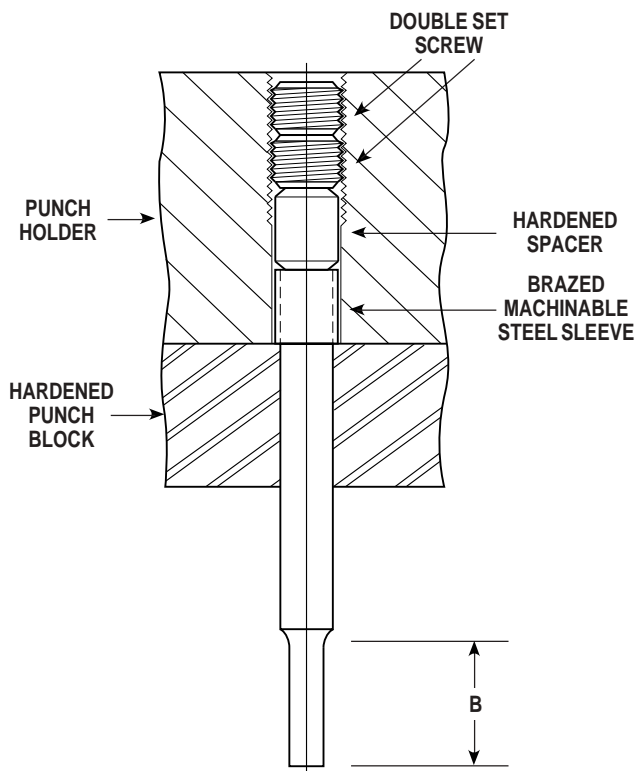
Just send us your print via mail, fax or e-mail and include the following information:

- Material type
- Material thickness
- Material hardness
- Break clearance per side

Carbide Punches with Machinable Steel Sleeve Type Head

These punches are recommended for medium to heavy punching requirements. They will out-perform steel punches many times, and they perform best when used in good quality dies.

The length of the steel sleeve (head thickness "T") is standard at 5mm or 13mm, but may be ordered at any specified dimension less than 13mm.

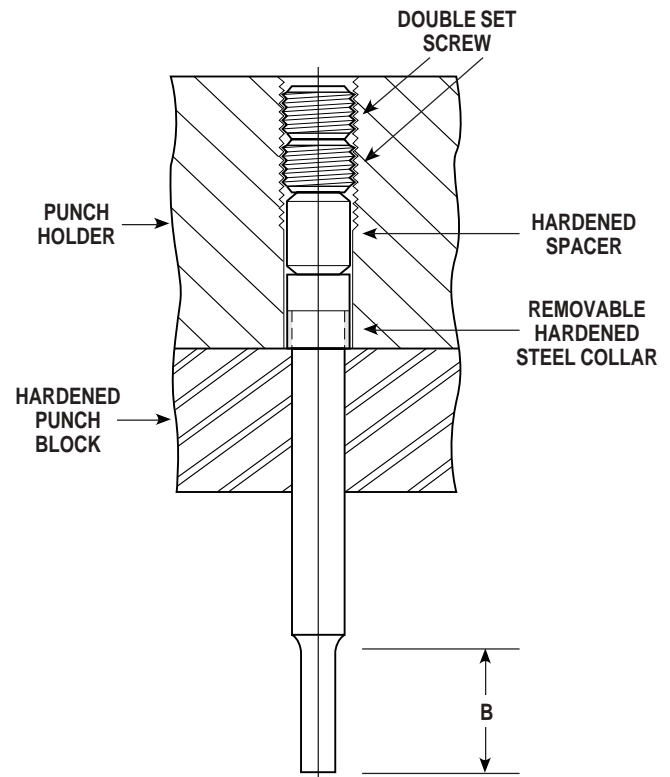


In the sectional view above, please note that:

1. Double set screws are recommended.
2. The hardened spacer next to the punch head is optional, and may be omitted.
3. By turning or grinding the shoulder of the soft steel head, the effective body length of the punch may be increased.
4. In most sizes, the length of the punch tip "B" may be renewed or increased by sending to OCP&D for regrinding, or by regrinding in your own shop.

Carbide Punches with Carbide Head and Hardened Steel Collar

These punches are for the stamper who prefers one piece carbide punches with carbide heads. They will out-perform steel punches many times when used in good quality dies.

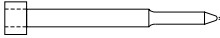

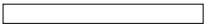
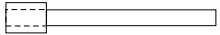
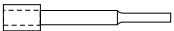
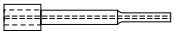
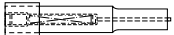
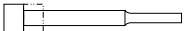
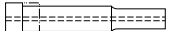
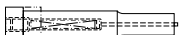
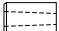
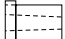
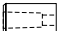

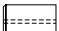
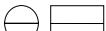


In the sectional view above, please note that:

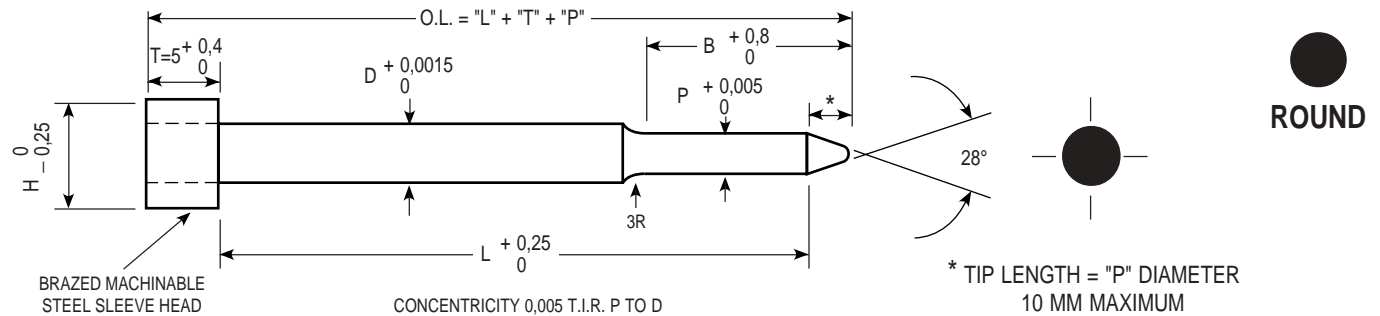
1. Double set screws are recommended.
2. The hardened spacer is optional, and may be omitted.
3. To facilitate adjustment, each punch is supplied with a hardened steel collar which may be removed and ground off.
4. In most sizes, the length of the punch tip "B" may be renewed or increased by sending to OCP&D for regrinding, or by regrinding in your own shop.

CONTENTS

METRIC Page

• Carbide Pilots with Machinable Steel Sleeve Head		5
• Carbide Pilots with Steel Pilot Body		5
• Carbide Round Blanks		6
• Carbide Punches, Straight Ground with		7
• Carbide Punches with Machinable Steel Sleeve Head		8
• Carbide Punches with Air Hole and Machinable Steel Sleeve Head		9
• Carbide Punches with Self-Contained Ejector Pin and Machinable Steel Sleeve Head		10
• Carbide Punches with Carbide Head and Hardened Steel Collar		11
• Carbide Punches with Air Hole, Carbide Head and Hardened Steel Collar		12
• Carbide Punches with Self-Contained Ejector Pin, Carbide Head and Hardened Steel Collar		13
• Carbide Die Inserts with Full Length Taper		14
• Carbide Die Inserts with Full Length Taper and Machinable Steel Sleeve Head		15
• Carbide Die Inserts with Counterbore		16
• Carbide Die Inserts with Counterbore and Machinable Steel Sleeve Head		17
• Carbide Die Inserts, Wire EDM Blanks With Starter Hole		18
• Carbide Die Inserts, Half Rounds		19
• Special Shapes		20
• Locating Devices		21

Carbide Pilots with Machinable Steel Sleeve Head



CATALOG NUMBER	D BODY DIAMETER	P POINT DIAMETER	B POINT LENGTH	H HEAD DIAMETER	L = LENGTH UNDER HEAD					
					40	50	60	70	80	90
1PNS-5M	5,0	1,50 - 5,00	20	8,00	•	•	•	•	•	•
1PNS-6M	6,0	1,50 - 5,00	20	9,00	•	•	•	•	•	•
2PNS-6M	6,0	5,01 - 6,00	25	9,00	•	•	•	•	•	•
1PNS-8M	8,0	4,00 - 8,00	25	11,00	•	•	•	•	•	•
1PNS-10M	10,0	5,00 - 10,00	25	13,00	•	•	•	•	•	•
1PNS-13M	13,0	10,00 - 13,00	25	16,00	•	•	•	•	•	•
1PNS-16M	16,0	10,00 - 16,00	25	19,00	•	•	•	•	•	•

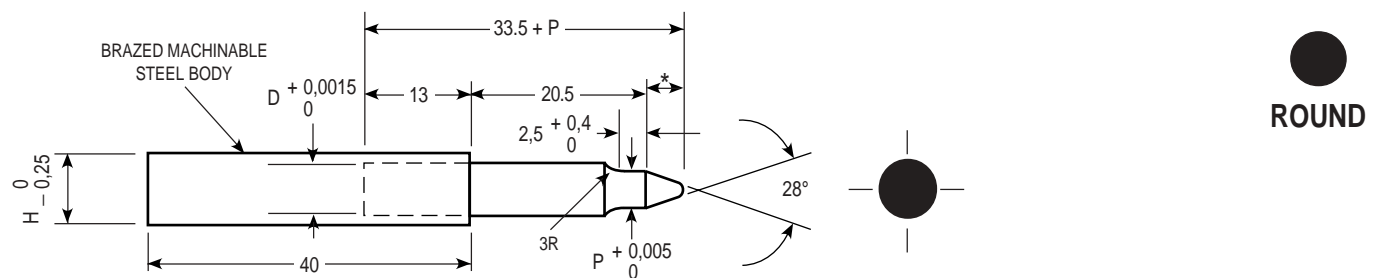
NOTE: ANY DIMENSION OTHER THAN THOSE SHOWN QUOTED ON REQUEST

WHEN ORDERING SPECIFY:

Quantity	Catalog Number	L	P
7	1PNS-8M	60,0	7,625



Carbide Pilots with Steel Pilot Body



CATALOG NUMBER	H STEEL BODY DIAMETER	D CARBIDE DIAMETER	P POINT DIAMETER
1PNSP-5M	8,00	5,0	1,50 - 5,00
1PNSP-6M	9,00	6,0	1,50 - 6,00
1PNSP-8M	11,00	8,0	3,00 - 8,00
1PNSP-10M	13,00	10,0	7,50 - 10,00

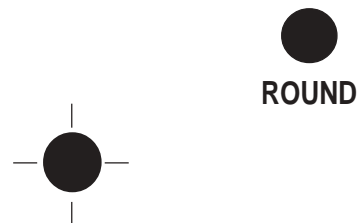
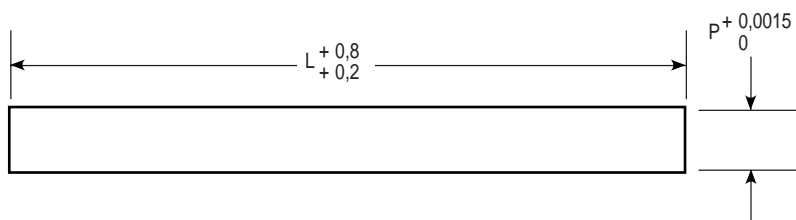
WHEN ORDERING SPECIFY:

Quantity	Catalog Number	P
6	1PNSP-8M	4,13

Any dimension other than those shown are available. Please ask for a special quotation.



Carbide Round Blanks Precision Ground



CATALOG NUMBER	P POINT DIAMETER	L = LENGTH					
		50	60	70	80	90	100
1PR-2M	2,00	•	•	•	•	•	•
1PR-3M	3,00	•	•	•	•	•	•
1PR-4M	4,00	•	•	•	•	•	•
1PR-5M	5,00	•	•	•	•	•	•
1PR-6M	6,00	•	•	•	•	•	•
1PR-8M	8,00	•	•	•	•	•	•
1PR-10M	10,00	•	•	•	•	•	•
1PR-13M	13,00	•	•	•	•	•	•
1PR-16M	16,00	•	•	•	•	•	•
1PR-20M	20,00	•	•	•	•	•	•
1PR-25M	25,00	•	•	•	•	•	•



NOTE: ANY DIMENSION OTHER THAN THOSE SHOWN QUOTED ON REQUEST

WHEN ORDERING SPECIFY:

Quantity	Catalog Number	L
12	1PR-8M	70

Carbide Round Blanks Precision Ground

CATALOG NUMBER	P + 0,005 0 DIAMETER	L = LENGTH + 0,8 + 0,2
1SCR-M	0,15 - 0,74	AVAILABLE IN LENGTHS UP TO 150 MM

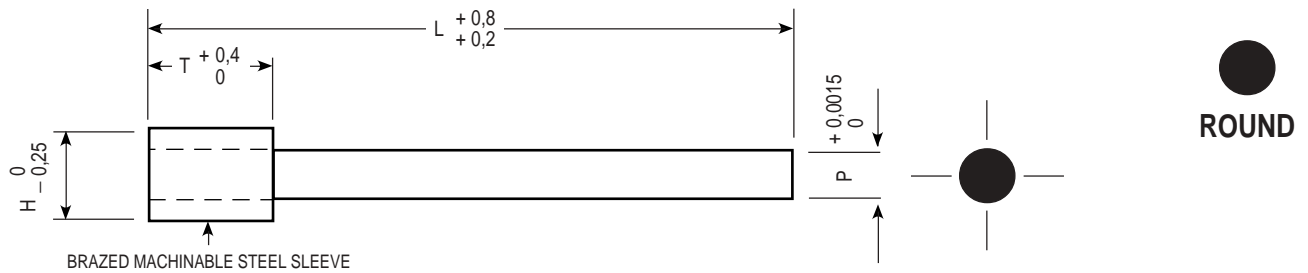
CATALOG NUMBER	P + 0,0015 0 DIAMETER	L = LENGTH + 0,8 + 0,2
2SCR-M	0,75 - 9,00	AVAILABLE IN LENGTHS UP TO 150 MM

NOTE: ANY DIMENSION OTHER THAN THOSE SHOWN QUOTED ON REQUEST

WHEN ORDERING SPECIFY:

Quantity	Catalog Number	L	P
10	2SCR-M	150	1,32

Carbide Punches, Straight Ground with Machinable Steel Sleeve Head



CATALOG NUMBER	P POINT DIAMETER	H HEAD DIAMETER	T HEAD LENGTH	L = LENGTH					
				50	60	70	80	90	100
1PQ-M	1,000 - 1,499	3,00	5	•	•	•	•	•	•
2PQ-M	1,500 - 1,999	3,00	5	•	•	•	•	•	•
3PQ-M	2,000	3,00	5	•	•	•	•	•	•
4PQ-M	2,001 - 2,500	5,00	5	•	•	•	•	•	•
5PQ-M	2,501 - 2,999	5,00	5	•	•	•	•	•	•
6PQ-M	3,000	5,00	5	•	•	•	•	•	•
7PQ-M	3,001 - 3,500	6,00	5	•	•	•	•	•	•
8PQ-M	3,501 - 3,999	6,00	5	•	•	•	•	•	•
9PQ-M	4,000	7,00	5	•	•	•	•	•	•
10PQ-M	4,001 - 4,500	7,00	13	•	•	•	•	•	•
11PQ-M	4,501 - 4,999	7,00	13	•	•	•	•	•	•
12PQ-M	5,000	8,00	13	•	•	•	•	•	•
13PQ-M	5,001 - 5,500	8,00	13	•	•	•	•	•	•
14PQ-M	5,501 - 5,999	8,00	13	•	•	•	•	•	•
15PQ-M	6,000	9,00	13	•	•	•	•	•	•
16PQ-M	6,001 - 6,999	9,00	13	•	•	•	•	•	•
17PQ-M	7,000 - 7,999	10,00	13	•	•	•	•	•	•
18PQ-M	8,000	11,00	13	•	•	•	•	•	•
19PQ-M	8,001 - 8,999	11,00	13	•	•	•	•	•	•
20PQ-M	9,000 - 9,999	12,00	13	•	•	•	•	•	•
21PQ-M	10,000	13,00	13	•	•	•	•	•	•
22PQ-M	13,000	16,00	13	•	•	•	•	•	•
23PQ-M	16,000	19,00	13	•	•	•	•	•	•
24PQ-M	20,000	23,00	13	•	•	•	•	•	•
25PQ-M	25,000	28,00	13	•	•	•	•	•	•

NOTE: ANY DIMENSION OTHER THAN THOSE SHOWN QUOTED ON REQUEST

WHEN ORDERING SPECIFY:

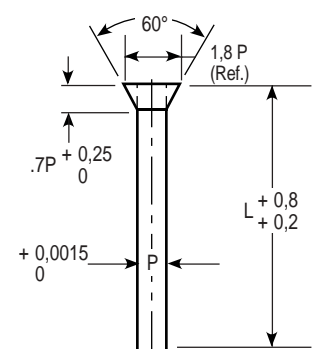
Quantity	Catalog Number	L	P
3	4PQ-M	80	2,50



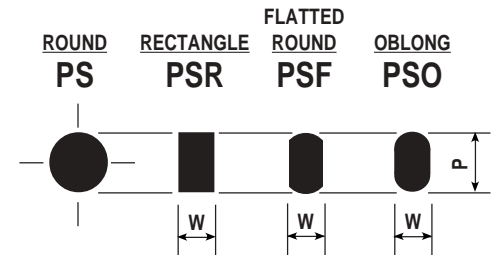
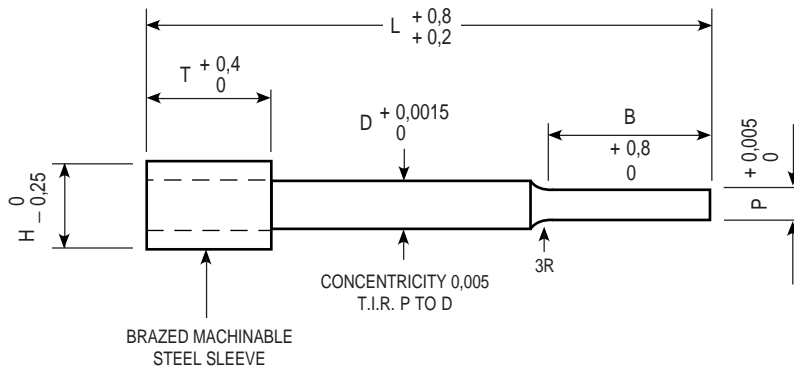
AVAILABLE ON
REQUEST - BRAZED
MACHINABLE STEEL
SLEEVE HEAD

CATALOG
NUMBER

PQB-M



Carbide Punches with Machinable Steel Sleeve Head



CATALOG NUMBER	D DIAMETER	P POINT DIAMETER	B POINT LENGTH	H HEAD DIAMETER	T HEAD LENGTH	L = LENGTH					
						50	60	70	80	90	100
1PS-3M	3,0	0,75 - 1,50	8	5,00	5	•	•	•	•	•	•
2PS-3M	3,0	1,51 - 3,00	20	5,00	5	•	•	•	•	•	•
1PS-4M	4,0	0,75 - 1,50	8	7,00	5	•	•	•	•	•	•
2PS-4M	4,0	1,51 - 4,00	20	7,00	5	•	•	•	•	•	•
1PS-5M	5,0	0,75 - 1,50	8	8,00	13	•	•	•	•	•	•
2PS-5M	5,0	1,51 - 5,00	20	8,00	13	•	•	•	•	•	•
1PS-6M	6,0	1,50 - 5,00	20	9,00	13	•	•	•	•	•	•
2PS-6M	6,0	5,01 - 6,00	22	9,00	13	•	•	•	•	•	•
1PS-8M	8,0	3,00 - 8,00	22	11,00	13	•	•	•	•	•	•
1PS-10M	10,0	7,00 - 10,00	22	13,00	13	•	•	•	•	•	•
1PS-13M	13,0	10,00 - 13,00	22	16,00	13	•	•	•	•	•	•
1PS-16M	16,0	11,00 - 16,00	22	19,00	13	•	•	•	•	•	•
1PS-20M	20,0	15,00 - 20,00	22	23,00	13	•	•	•	•	•	•

NOTE: ANY DIMENSION OTHER THAN THOSE SHOWN QUOTED ON REQUEST

All outside corners to be sharp unless otherwise specified by customer.

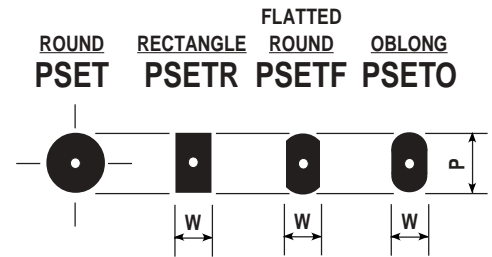
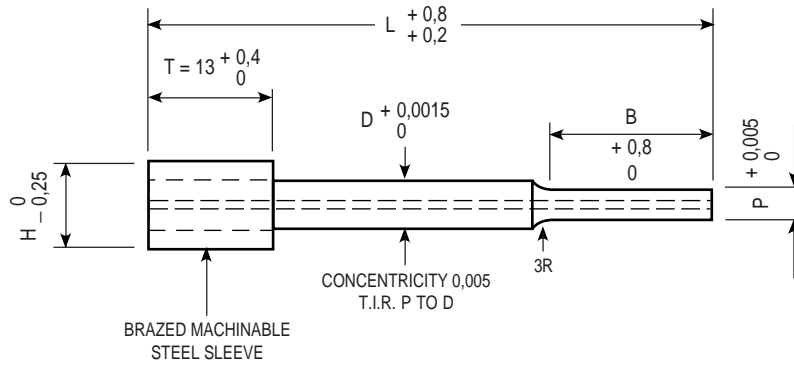


WHEN ORDERING SPECIFY:

Quantity	Catalog Number	L	P
5	1PS-8M	90	7,23

Quantity	Catalog Number	L	Point Dimensions
16	1PSR-6M	60	W = 2,12 P = 3,06

Carbide Punches with Air Hole and Machinable Steel Sleeve Head



CATALOG NUMBER	D DIAMETER	P POINT DIAMETER	B POINT LENGTH	H HEAD DIAMETER	L = LENGTH						
					AIR HOLE DIA.	50	60	70	80	90	100
1PSET-5M	5,0	2,50 - 5,00	20	8,00	1,2	•	•	•	•	•	•
1PSET-6M	6,0	2,50 - 6,00	20	9,00	1,2	•	•	•	•	•	•
1PSET-8M	8,0	4,00 - 8,00	22	11,00	1,2	•	•	•	•	•	•
1PSET-10M	10,0	7,00 - 10,00	22	13,00	2,8	•	•	•	•	•	•
1PSET-13M	13,0	10,00 - 13,00	22	16,00	3,6	•	•	•	•	•	•
1PSET-16M	16,0	11,00 - 16,00	22	19,00	3,6	•	•	•	•	•	•
1PSET-20M	20,0	15,00 - 20,00	22	23,00	3,6	•	•	•	•	•	•

NOTE: ANY DIMENSION OTHER THAN THOSE SHOWN QUOTED ON REQUEST

All outside corners to be sharp unless otherwise specified by customer.

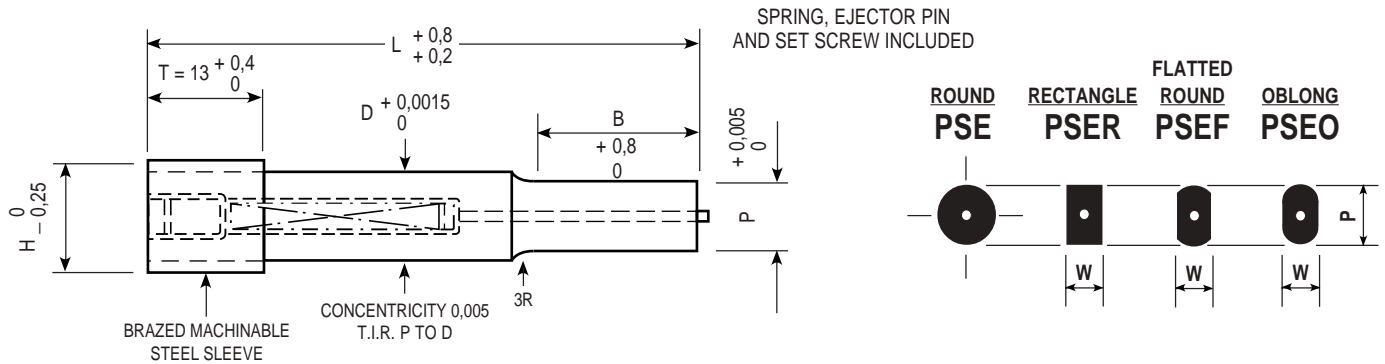


WHEN ORDERING SPECIFY:

Quantity	Catalog Number	L	P
5	1PSET-5M	50	4,23

Quantity	Catalog Number	L	Point Dimensions
12	1PSETO-5M	50	W = 3,23 P = 4,23

Carbide Punches with Self-Contained Ejector Pin and Machinable Steel Sleeve Head



CATALOG NUMBER	D DIAMETER	P POINT DIAMETER	B POINT LENGTH	H HEAD DIAMETER	L = LENGTH					
					50	60	70	80	90	100
1PSE-5M	5,0	2,50 - 5,00	20	8,00	•	•	•	•	•	•
1PSE-6M	6,0	2,50 - 6,00	20	9,00	•	•	•	•	•	•
1PSE-8M	8,0	4,00 - 8,00	22	11,00	•	•	•	•	•	•
1PSE-10M	10,0	7,00 - 10,00	22	13,00	•	•	•	•	•	•
1PSE-13M	13,0	10,00 - 13,00	22	16,00	•	•	•	•	•	•
1PSE-16M	16,0	11,00 - 16,00	22	19,00	•	•	•	•	•	•
1PSE-20M	20,0	15,00 - 20,00	22	23,00	•	•	•	•	•	•

NOTE: ANY DIMENSION OTHER THAN THOSE SHOWN QUOTED ON REQUEST

All outside corners to be sharp unless otherwise specified by customer.

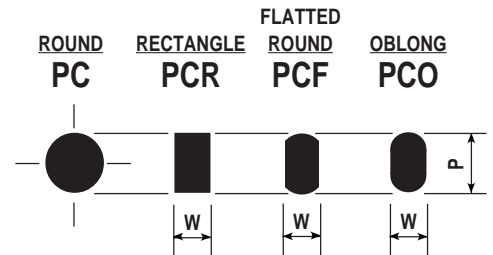
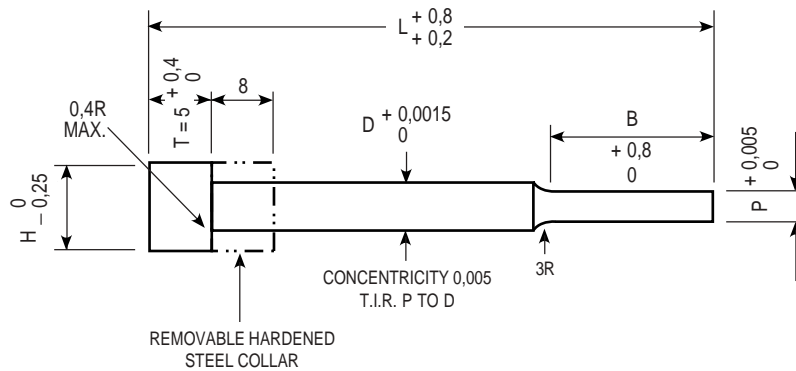


WHEN ORDERING SPECIFY:

Quantity	Catalog Number	L	P
5	1PSE-13M	90	10,12

Quantity	Catalog Number	L	Point Dimensions
12	1PSER-13M	90	W = 6,00 P = 7,00

Carbide Punches with Carbide Head and Hardened Steel Collar



CATALOG NUMBER	D BODY DIAMETER	P POINT DIAMETER	B POINT LENGTH	H HEAD DIAMETER	L = LENGTH					
					50	60	70	80	90	100
1PC-4M	4,0	0,75 - 1,50	8	7,00	•	•	•	•	•	•
2PC-4M	4,0	1,51 - 4,00	20	7,00	•	•	•	•	•	•
1PC-5M	5,0	0,75 - 1,50	8	8,00	•	•	•	•	•	•
2PC-5M	5,0	1,51 - 5,00	20	8,00	•	•	•	•	•	•
1PC-6M	6,0	1,50 - 5,00	20	9,00	•	•	•	•	•	•
2PC-6M	6,0	5,01 - 6,00	22	9,00	•	•	•	•	•	•
1PC-8M	8,0	3,00 - 8,00	22	11,00	•	•	•	•	•	•
1PC-10M	10,0	7,00 - 10,00	22	13,00	•	•	•	•	•	•
1PC-13M	13,0	10,00 - 13,00	22	16,00	•	•	•	•	•	•
1PC-16M	16,0	11,00 - 16,00	22	19,00	•	•	•	•	•	•
1PC-20M	20,0	15,00 - 20,00	22	23,00	•	•	•	•	•	•

NOTE: ANY DIMENSION OTHER THAN THOSE SHOWN QUOTED ON REQUEST

All outside corners to be sharp unless otherwise specified by customer.

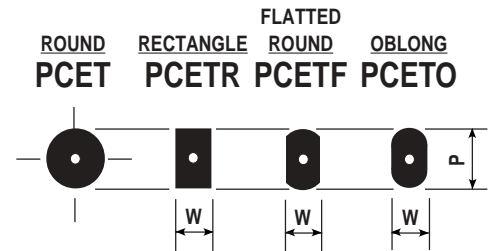
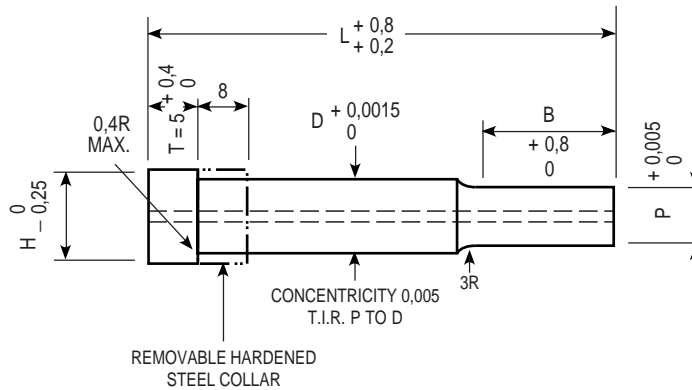


WHEN ORDERING SPECIFY:

Quantity	Catalog Number	L	P
5	2PC-6M	100	5,50

Quantity	Catalog Number	L	Point Dimensions
12	2PCF-6M	100	W = 4,50 P = 5,50

Carbide Punches with Air Hole, Carbide Head and Hardened Steel Collar



CATALOG NUMBER	D BODY DIAMETER	P POINT DIAMETER	B POINT LENGTH	H HEAD DIAMETER	L = LENGTH						
					AIR HOLE DIA.	50	60	70	80	90	100
1PCET-5M	5,0	2,50 - 5,00	20	8,00	1,2	•	•	•	•	•	•
1PCET-6M	6,0	2,50 - 6,00	20	9,00	1,2	•	•	•	•	•	•
1PCET-8M	8,0	4,00 - 8,00	22	11,00	1,2	•	•	•	•	•	•
1PCET-10M	10,0	7,00 - 10,00	22	13,00	2,8	•	•	•	•	•	•
1PCET-13M	13,0	10,00 - 13,00	22	16,00	3,6	•	•	•	•	•	•
1PCET-16M	16,0	11,00 - 16,00	22	19,00	3,6	•	•	•	•	•	•
1PCET-20M	20,0	15,00 - 20,00	22	23,00	3,6	•	•	•	•	•	•

All outside corners to be sharp unless otherwise specified by customer.

NOTE: ANY DIMENSION OTHER THAN THOSE SHOWN QUOTED ON REQUEST

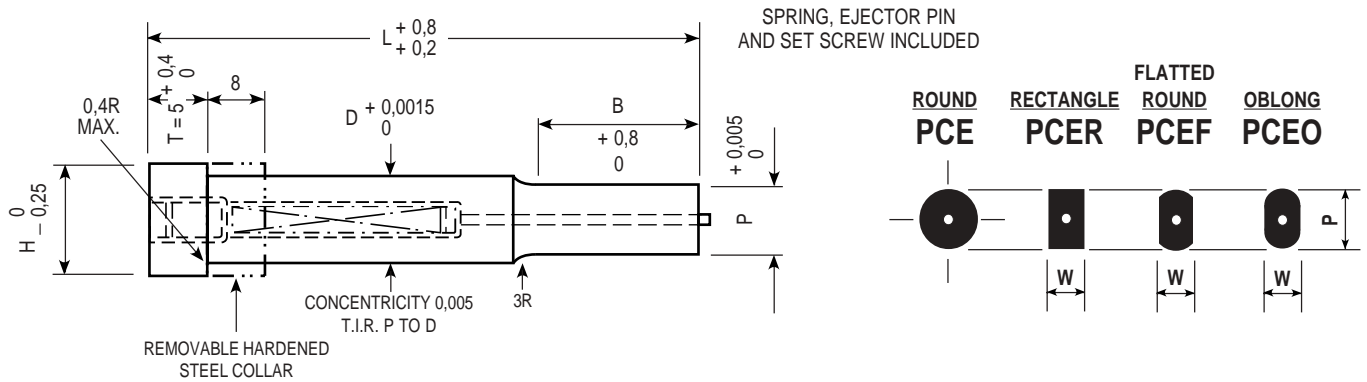


WHEN ORDERING SPECIFY:

Quantity	Catalog Number	L	P
5	1PCET-8M	60	5,50

Quantity	Catalog Number	L	Point Dimensions
12	1PCETR-8M	60	W = 4,50 P = 5,50

Carbide Punches with Self-Contained Ejector Pin, Carbide Head and Hardened Steel Collar



CATALOG NUMBER	D BODY DIAMETER	P POINT DIAMETER	B POINT LENGTH	H HEAD DIAMETER	L = LENGTH					
					50	60	70	80	90	100
1PCE-5M	5,0	2,50 - 5,00	20	8,00	•	•	•	•	•	•
1PCE-6M	6,0	2,50 - 6,00	20	9,00	•	•	•	•	•	•
1PCE-8M	8,0	4,00 - 8,00	22	11,00	•	•	•	•	•	•
1PCE-10M	10,0	7,00 - 10,00	22	13,00	•	•	•	•	•	•
1PCE-13M	13,0	10,00 - 13,00	22	16,00	•	•	•	•	•	•
1PCE-16M	16,0	11,00 - 16,00	22	19,00	•	•	•	•	•	•
1PCE-20M	20,0	15,00 - 20,00	22	23,00	•	•	•	•	•	•

NOTE: ANY DIMENSION OTHER THAN THOSE SHOWN QUOTED ON REQUEST



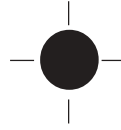
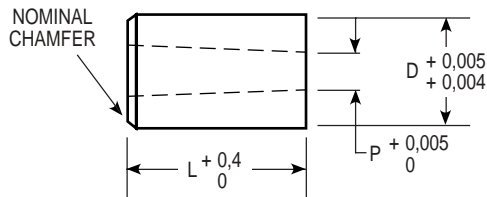
All outside corners to be sharp unless otherwise specified by customer.

WHEN ORDERING SPECIFY:

Quantity	Catalog Number	L	P
5	1PCE-8M	80	6,92

Quantity	Catalog Number	L	Point Dimensions
12	1PCER-8M	80	W = 5,00 P = 5,00

Carbide Die Inserts with Full Length Taper



ROUND

CONCENTRICITY O.D. AND I.D., 0,005 T.I.R.
* TAPER IN "P" 0° - 9° PER SIDE

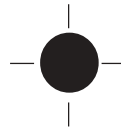
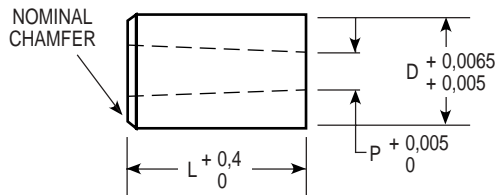
CATALOG NUMBER	D BODY DIAMETER	P INSIDE DIAMETER	L = LENGTH	
			25	32
1DT-4M	4,0	0,75 - 2,00	•	•
1DT-5M	5,0	0,75 - 2,50	•	•
1DT-6M	6,0	0,75 - 3,50	•	•
1DT-8M	8,0	0,75 - 5,25	•	•



NOTE: ANY DIMENSION OTHER THAN THOSE SHOWN QUOTED ON REQUEST

WHEN ORDERING SPECIFY:

Quantity	Catalog Number	L	P
3	1DT-8M	25	4,00



ROUND

CONCENTRICITY O.D. AND I.D., 0,005 T.I.R.
* TAPER IN "P" 0° - 9° PER SIDE

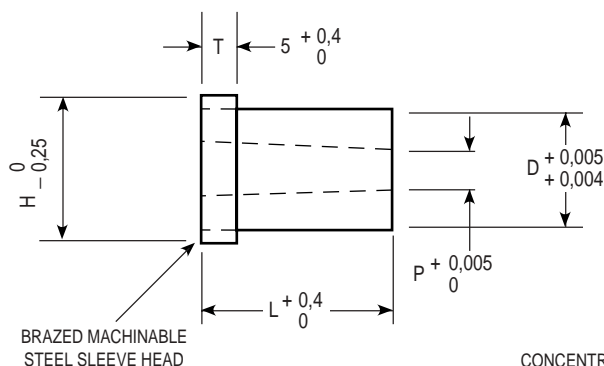
CATALOG NUMBER	D BODY DIAMETER	P INSIDE DIAMETER	L = LENGTH	
			25	32
1DT-10M	10,0	4,00 - 7,00	•	•
1DT-13M	13,0	4,00 - 8,50	•	•
1DT-16M	16,0	6,50 - 10,00	•	•
1DT-20M	20,0	9,50 - 14,00	•	•
1DT-25M	25,0	9,50 - 17,50	•	•

NOTE: ANY DIMENSION OTHER THAN THOSE SHOWN QUOTED ON REQUEST

WHEN ORDERING SPECIFY:

Quantity	Catalog Number	L	P
2	1DT-20M	32	10,00

Carbide Die Inserts with Full Length Taper and Machinable Steel Sleeve Head



●
ROUND

CONCENTRICITY O.D. AND I.D., 0,005 T.I.R.
* TAPER IN "P" 0° - 9° PER SIDE

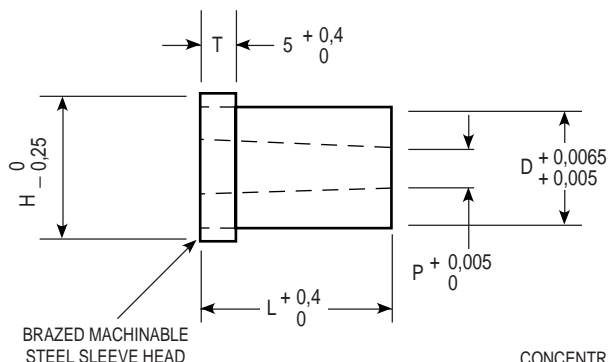
CATALOG NUMBER	D BODY DIAMETER	P INSIDE DIAMETER	H HEAD DIAMETER	L = LENGTH	
				25	32
1DTS-4M	4,0	0,75 - 2,00	7,00	•	•
1DTS-5M	5,0	0,75 - 2,50	8,00	•	•
1DTS-6M	6,0	0,75 - 3,50	9,00	•	•
1DTS-8M	8,0	0,75 - 5,25	11,00	•	•

NOTE: ANY DIMENSION OTHER THAN THOSE SHOWN QUOTED ON REQUEST



WHEN ORDERING SPECIFY:

Quantity	Catalog Number	L	P
2	1DTS-8M	25	4,50



●
ROUND

CONCENTRICITY O.D. AND I.D., 0,005 T.I.R.
* TAPER IN "P" 0° - 9° PER SIDE

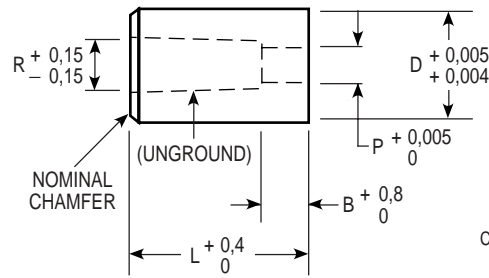
CATALOG NUMBER	D BODY DIAMETER	P INSIDE DIAMETER	H HEAD DIAMETER	L = LENGTH	
				25	32
1DTS-10M	10,0	4,00 - 7,00	13,00	•	•
1DTS-13M	13,0	4,00 - 8,50	16,00	•	•
1DTS-16M	16,0	6,50 - 10,00	19,00	•	•
1DTS-20M	20,0	9,50 - 14,00	23,00	•	•
1DTS-25M	25,0	9,50 - 17,50	28,00	•	•

NOTE: ANY DIMENSION OTHER THAN THOSE SHOWN QUOTED ON REQUEST

WHEN ORDERING SPECIFY:

Quantity	Catalog Number	L	P
3	1DTS-25M	32	16,12

Carbide Die Inserts with Counterbore



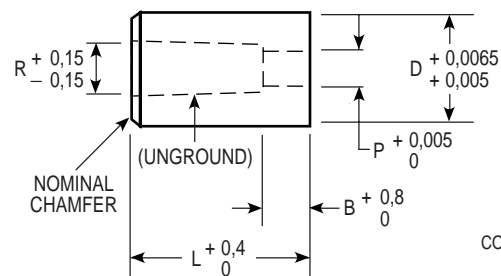
CONCENTRICITY O.D. AND I.D., 0,005 T.I.R.
* TAPER IN "P" 0° - 9° PER SIDE



CATALOG NUMBER	D BODY DIAMETER	P INSIDE DIAMETER	R RELIEF DIAMETER	B LAND	L = LENGTH	
					25	32
1DC-6M	6,0	2,34 - 2,75	3,2	5,0	•	•
2DC-6M	6,0	2,76 - 3,15	3,7	5,0	•	•
3DC-6M	6,0	3,16 - 3,56	4,0	6,4	•	•
1DC-8M	8,0	2,34 - 2,75	3,2	5,0	•	•
2DC-8M	8,0	2,76 - 3,15	3,7	5,0	•	•
3DC-8M	8,0	3,16 - 3,56	4,0	6,4	•	•
4DC-8M	8,0	3,57 - 4,58	5,3	6,4	•	•
5DC-8M	8,0	4,59 - 4,96	5,6	6,4	•	•



NOTE: ANY DIMENSION OTHER THAN THOSE SHOWN QUOTED ON REQUEST



CONCENTRICITY O.D. AND I.D., 0,005 T.I.R.
* TAPER IN "P" 0° - 9° PER SIDE



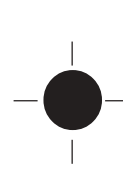
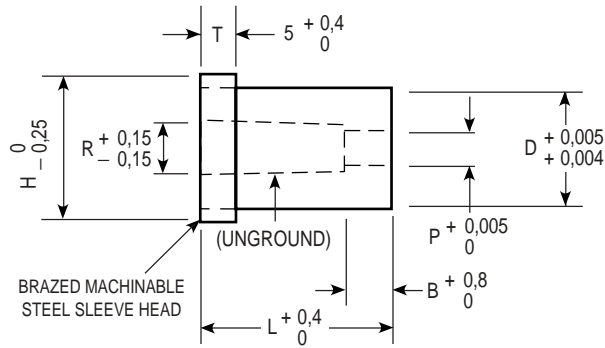
CATALOG NUMBER	D BODY DIAMETER	P INSIDE DIAMETER	R RELIEF DIAMETER	B LAND	L = LENGTH	
					25	32
1DC-10M	10,0	3,95 - 5,70	P + 0,4	10,0	•	•
1DC-13M	13,0	3,95 - 7,60	P + 0,4	10,0	•	•
1DC-16M	16,0	6,60 - 10,00	P + 0,4	10,0	•	•
1DC-20M	20,0	9,50 - 13,85	P + 0,4	10,0	•	•
1DC-25M	25,0	9,50 - 17,50	P + 0,4	10,0	•	•

NOTE: ANY DIMENSION OTHER THAN THOSE SHOWN QUOTED ON REQUEST

WHEN ORDERING SPECIFY:

Quantity	Catalog Number	L	P
6	4DC-8M	25	4,00

Carbide Die Inserts with Counterbore and Machinable Steel Sleeve Head

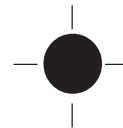
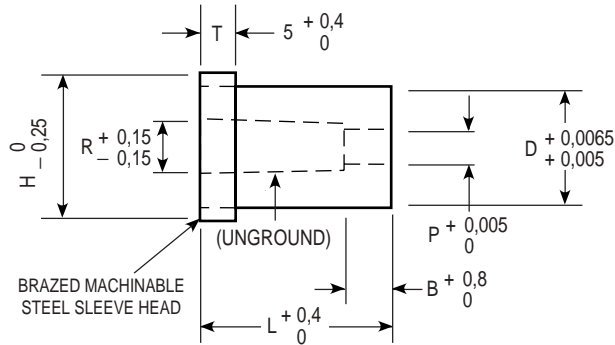


CONCENTRICITY O.D. AND I.D., 0,005 T.I.R.
* TAPER IN "P" 0° - 9° PER SIDE

CATALOG NUMBER	D BODY DIAMETER	P INSIDE DIAMETER	R RELIEF DIAMETER	B LAND	H HEAD DIAMETER	L = LENGTH	
						25	32
1DCS-6M	6,0	2,34 - 2,75	3,2	5,0	9,00	•	•
2DCS-6M	6,0	2,76 - 3,15	3,7	5,0	9,00	•	•
3DCS-6M	6,0	3,16 - 3,56	4,0	6,4	9,00	•	•
1DCS-8M	8,0	2,34 - 2,75	3,2	5,0	11,00	•	•
2DCS-8M	8,0	2,76 - 3,15	3,7	5,0	11,00	•	•
3DCS-8M	8,0	3,16 - 3,56	4,0	6,4	11,00	•	•
4DCS-8M	8,0	3,57 - 4,58	5,3	6,4	11,00	•	•
5DCS-8M	8,0	4,59 - 4,96	5,6	6,4	11,00	•	•



NOTE: ANY DIMENSION OTHER THAN THOSE SHOWN QUOTED ON REQUEST



CONCENTRICITY O.D. AND I.D., 0,005 T.I.R.
* TAPER IN "P" 0° - 9° PER SIDE

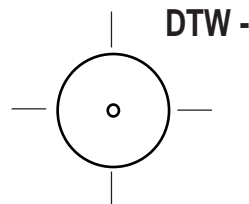
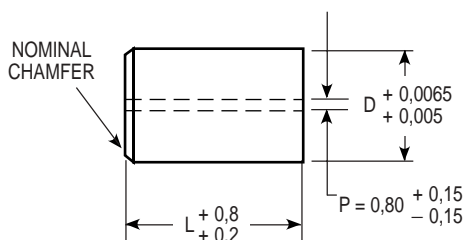
CATALOG NUMBER	D BODY DIAMETER	P INSIDE DIAMETER	R RELIEF DIAMETER	B LAND	H HEAD DIAMETER	L = LENGTH	
						25	32
1DCS-10M	10,0	3,95 - 5,70	P + 0,4	10,0	13,00	•	•
1DCS-13M	13,0	3,95 - 7,60	P + 0,4	10,0	16,00	•	•
1DCS-16M	16,0	6,60 - 10,00	P + 0,4	10,0	19,00	•	•
1DCS-20M	20,0	9,50 - 13,85	P + 0,4	10,0	23,00	•	•
1DCS-25M	25,0	9,50 - 17,50	P + 0,4	10,0	28,00	•	•

NOTE: ANY DIMENSION OTHER THAN THOSE SHOWN QUOTED ON REQUEST

WHEN ORDERING SPECIFY:

Quantity	Catalog Number	L	P
6	1DCS-13M	32	6,40

Carbide Die Inserts, Wire EDM Blanks With Starter Hole



CATALOG NUMBER	D BODY DIAMETER	L = LENGTH	
		25	32
1DTW-5M	5,0	•	•
1DTW-6M	6,0	•	•
1DTW-8M	8,0	•	•
1DTW-10M	10,0	•	•
1DTW-13M	13,0	•	•
1DTW-16M	16,0	•	•
1DTW-20M	20,0	•	•
1DTW-25M	25,0	•	•

NOTE: ANY DIMENSION OTHER THAN THOSE SHOWN QUOTED ON REQUEST

WHEN ORDERING SPECIFY:

Quantity	Catalog Number	L
4	1DTW-8M	25

BRAZED MACHINABLE STEEL SLEEVE HEAD AVAILABLE



Please specify locating devices by the following designations:

DS = Dowel Slot = 3,0

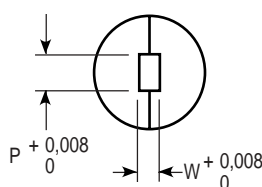
F1 = Single Flat $\left(\frac{D}{2} - 1,5\right)$

F2 = Double Flat $\left(\frac{D}{2} - 1,5\right)$

All locating devices will be parallel to the longest dimension.

Special locations or devices will be furnished if fully dimensioned print is provided.

DTWR -



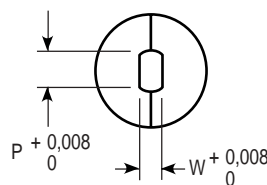
RECTANGLE (Including Square)

INTERNAL TAPER 0° 9' PER SIDE*
CORNER RADIUS = 0,18
CONCENTRICITY O.D. AND I.D. 0,009 T.I.R.

WHEN ORDERING SPECIFY:

Quantity	Catalog Number	L	Hole Size		Locating Device
			W	P	
26	1DTWR-8M	32	2,0	4,0	F1

DTWF -



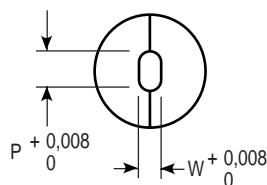
FLATTED ROUND

INTERNAL TAPER 0° 9' PER SIDE*
CORNER RADIUS = 0,18
CONCENTRICITY O.D. AND I.D. 0,009 T.I.R.

WHEN ORDERING SPECIFY:

Quantity	Catalog Number	L	Hole Size		Locating Device
			W	P	
18	1DTWF-8M	32	2,0	4,0	F1

DTWO -



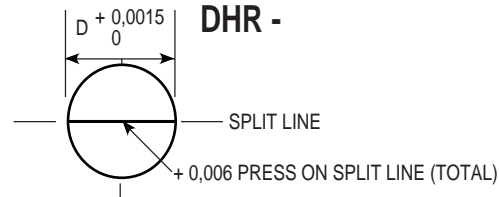
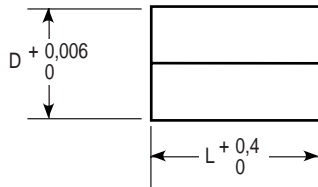
OBLONG

INTERNAL TAPER 0° 9' PER SIDE*
CONCENTRICITY O.D. AND I.D. 0,009 T.I.R.

WHEN ORDERING SPECIFY:

Quantity	Catalog Number	L	Hole Size		Locating Device
			W	P	
18	1DTWO-8M	32	2,0	4,0	F1

Carbide Die Inserts, Half Rounds



WHEN ORDERING SPECIFY:

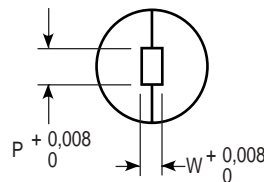
CATALOG NUMBER	D BODY DIAMETER	L = LENGTH	
		25	32
1DHR-6M	6,0	•	•
1DHR-8M	8,0	•	•
1DHR-10M	10,0	•	•
1DHR-13M	13,0	•	•
1DHR-16M	16,0	•	•
1DHR-20M	20,0	•	•
1DHR-25M	25,0	•	•

NOTE: ANY DIMENSION OTHER THAN THOSE SHOWN
QUOTED ON REQUEST

Quantity	Catalog Number	L
8	1DHR-8M	32

The press fit across the split is slightly larger
than normal to prevent separation during
operation

DHRR -



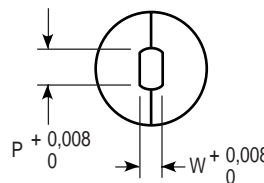
RECTANGLE (Including Square)

INTERNAL TAPER 0° 9' PER SIDE*
CORNER RADIUS = 0,127
CONCENTRICITY O.D. AND I.D. 0,009 T.I.R.

WHEN ORDERING SPECIFY:

Quantity	Catalog Number	L	Hole Size		Locating Device
			W	P	
26	1DHRR-8M	32	2,0	4,0	F1

DHRF -



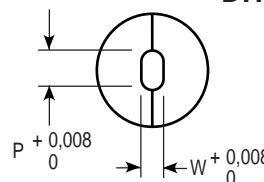
FLATTED ROUND

INTERNAL TAPER 0° 9' PER SIDE*
CORNER RADIUS = 0,127
CONCENTRICITY O.D. AND I.D. 0,009 T.I.R.

WHEN ORDERING SPECIFY:

Quantity	Catalog Number	L	Hole Size		Locating Device
			W	P	
18	1DHRF-8M	32	2,0	4,0	F1

DHRO -

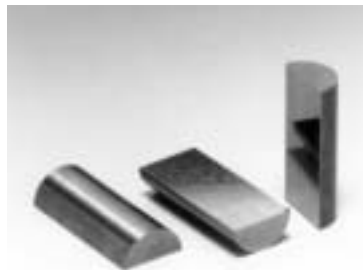


OBLONG

INTERNAL TAPER 0° 9' PER SIDE*
CONCENTRICITY O.D. AND I.D. 0,009 T.I.R.

WHEN ORDERING SPECIFY:

Quantity	Catalog Number	L	Hole Size		Locating Device
			W	P	
18	1DHRO-8M	32	2,0	4,0	F1



Please specify locating devices by the
following designations:

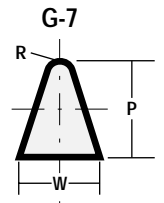
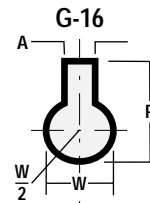
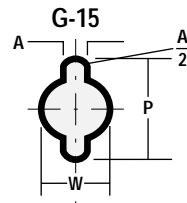
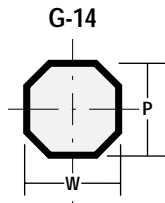
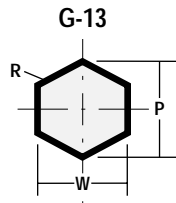
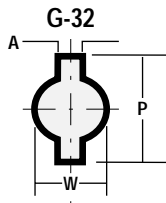
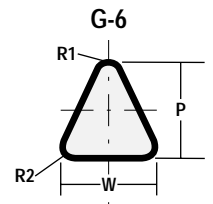
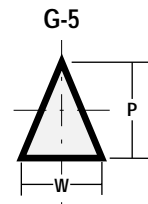
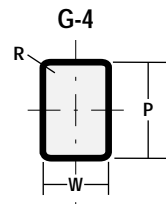
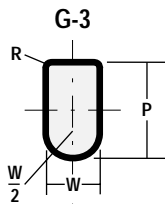
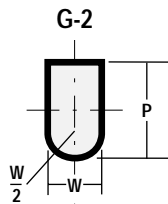
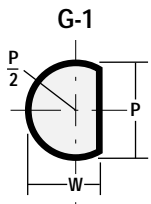
DS = Dowel Slot = 3,0

F1 = Single Flat $\left(\frac{D}{2} - 1,5\right)$

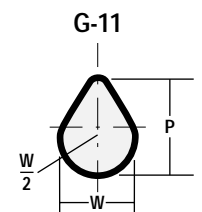
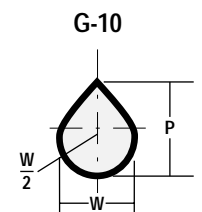
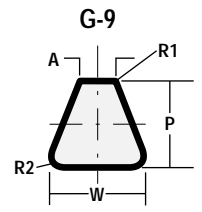
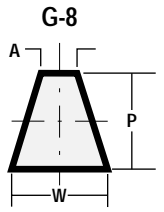
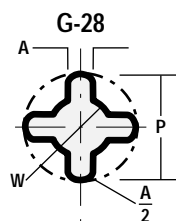
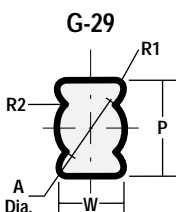
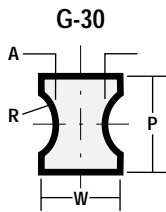
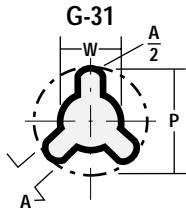
F2 = Double Flat $\left(\frac{D}{2} - 1,5\right)$

All locating devices will be parallel to the
longest dimension.

Special locations or devices will be furnished if
fully dimensioned print is provided.

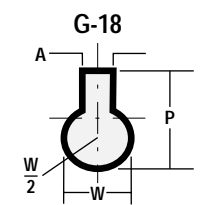
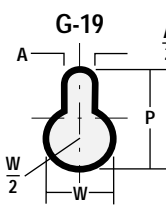
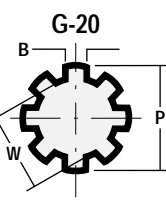
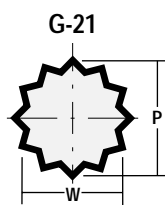
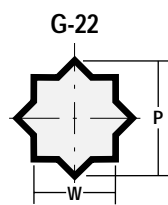
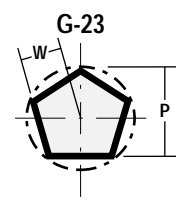
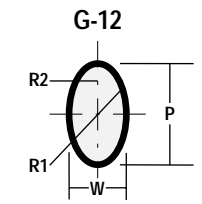
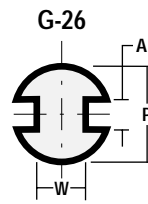
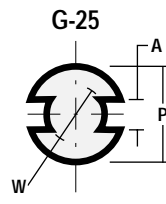
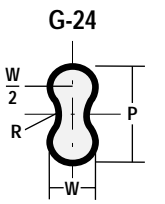
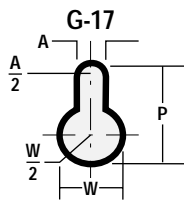
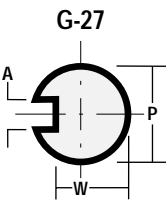


A = No. of Sides



Special Shapes

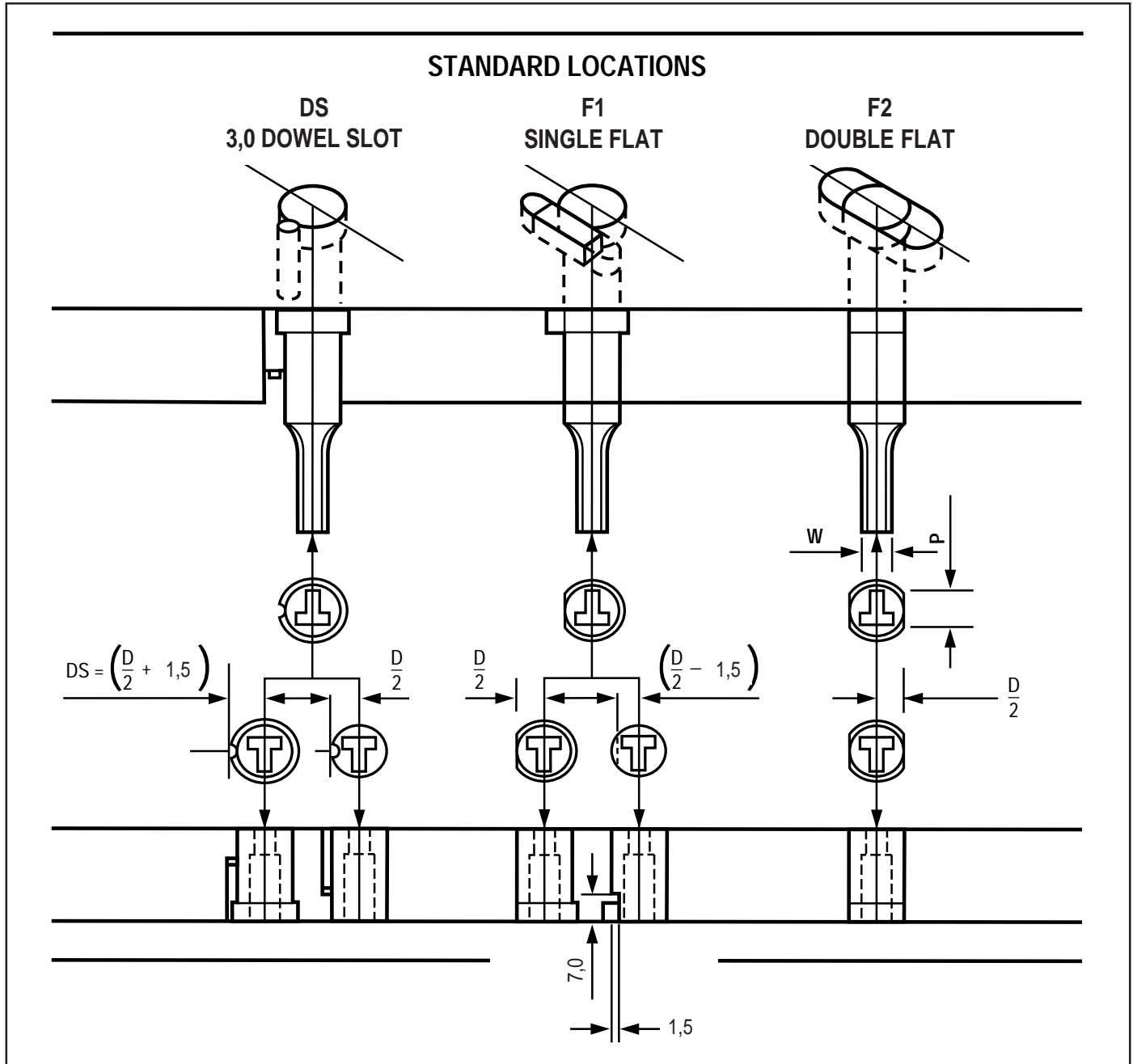
Our customers have requirements for punches and inserts with special shapes or configurations. We have manufactured literally hundreds of these special shaped components for companies all over the world. Those shown on this page represent only a random sampling. We'd like to quote on your next "special." For any shape not listed, send us your fully dimensioned print and we'll send you a quotation.



A = No. of Sides

A = No. of Teeth

Locating Devices



STANDARD LOCATIONS

Standard dowel and key locations are located parallel to the longest dimension ("P") for positive alignment.

HOW TO ORDER

Use code — DS, F1, or F2 after item ordered.

Please specify locating devices by the following designations:

DS = Dowel Slot = 3,0

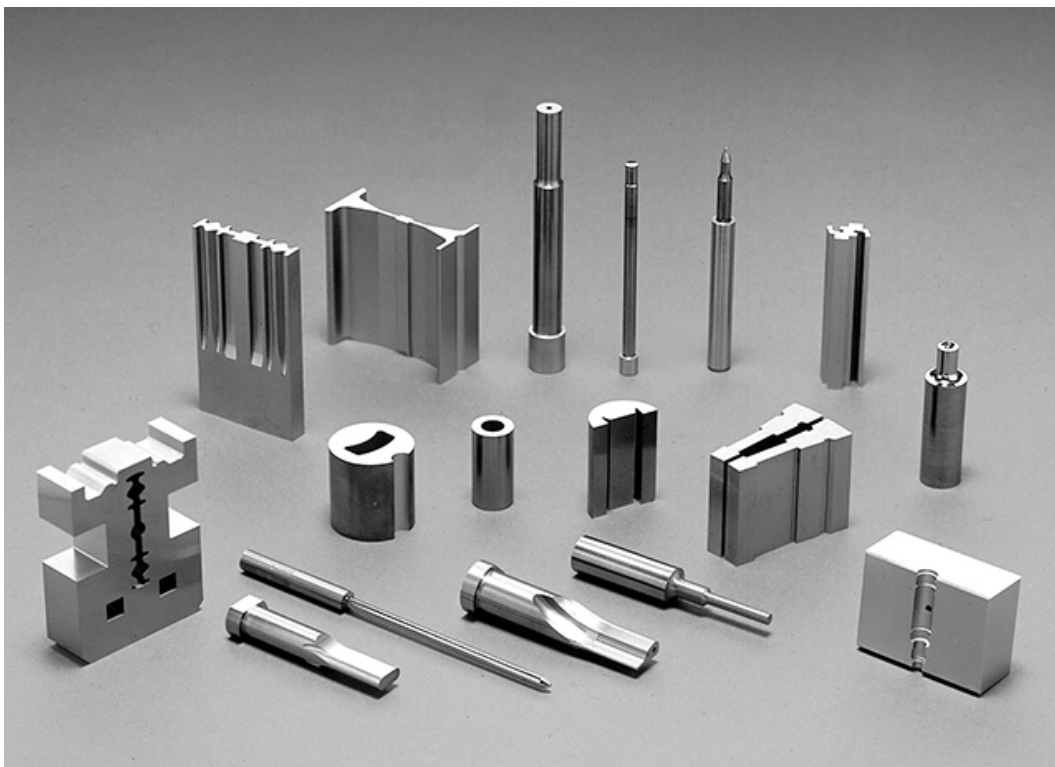
F1 = Single Flat $\left(\frac{D}{2} - 1,5 \right)$

F2 = Double Flat $\left(\frac{D}{2} - 1,5 \right)$

All locating devices will be parallel to the longest dimension.

Special locations or devices will be furnished if fully dimensioned print is provided.

Oberg Precision Tooling



Oberg Industries manufactures carbide die components specifically to your print or drawing, regardless of shape or size. In many instances your special die components can be either precision ground or manufactured utilizing traveling wire electrical discharge machining (EDM).

Since 1948 Oberg Industries has been recognized as the world's leading manufacturer of precision carbide stamping die components, tooling and carbide wear parts. We specialize in the design and build of precision dies to make both flat and formed parts, especially those producing one or multiple parts with each press stroke.

With the finest manufacturing facilities and equipment, operated by the best trained craftsmen available, we've committed ourselves to maintaining our industry leadership position well into the 21st Century.