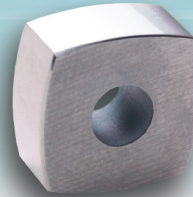


Power Feed Contacts for Wire EDM Machines

EDM-072N



EDM-091N



For ONA Models	Location	Manufacturer's Part Number	Oberg Catalog Number	Contacts Per Machine
<ul style="list-style-type: none"> ▪ E2-50 ▪ E-400, -900 ▪ RE250, 400, 900 ▪ S-250, -400 	Upper	AE 6699003	EDM-072N	1
	Lower	AE 6699003	EDM-072N	1
<ul style="list-style-type: none"> ▪ KE350, 450, 500, 1000 	Upper	AE 6699012	EDM-091N	1
	Lower	AE 6699012	EDM-091N	1

If you are unable to identify or locate your power feed contact with the information provided above, please call us at: (724)295-2118.



Oberg Industries
FREEPORT

604 Oberg Drive, P.O. Box 368, Freeport, PA 16229-0315 U.S.A.
Phone: (724)295-2118 | Fax: (724)295-3870
www.oberg.com | inquire@oberg.com

Distributed by: