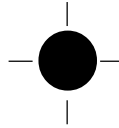
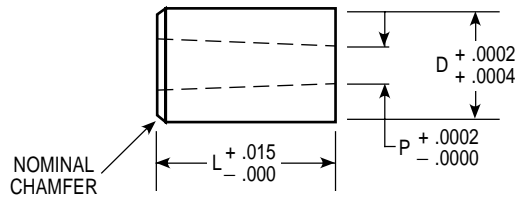


Carbide Die Inserts with Full Length Taper



ROUND

CONCENTRICITY O.D. AND I.D., .0002" T.I.R.
TAPER IN "P," .0025" PER INCH PER SIDE

| CATALOG NUMBER | D BODY DIAMETER | P INSIDE DIAMETER | L = LENGTH | |
|----------------|-----------------------|-------------------------|------------|-------|
| | | | 1 | 1 1/4 |
| 1DT-H18 | .1875 | .030 - .0519 | • | • |
| 2DT-H18 | .1875 | .052 - .0749 | • | • |
| 3DT-H18 | .1875 | .075 - .0969 | • | • |
| 1DT-H25A | .250 | .030 - .0519 | • | • |
| 1DT-H25 | .250 | .052 - .0749 | • | • |
| 2DT-H25 | .250 | .075 - .0969 | • | • |
| 3DT-H25 | .250 | .097 - .1199 | • | • |
| 4DT-H25 | .250 | .120 - .156 | • | • |
| 1DT-H31 | .3125 | .030 - .0519 | • | • |
| 2DT-H31 | .3125 | .052 - .0749 | • | • |
| 3DT-H31 | .3125 | .075 - .0969 | • | • |
| 4DT-H31 | .3125 | .097 - .1199 | • | • |
| 5DT-H31 | .3125 | .120 - .206 | • | • |
| 1DT-H37 | .375 | .030 - .0519 | • | • |
| 2DT-H37 | .375 | .052 - .0749 | • | • |
| 3DT-H37 | .375 | .075 - .0969 | • | • |
| 4DT-H37 | .375 | .097 - .1199 | • | • |
| 5DT-H37 | .375 | .120 - .206 | • | • |



NOTE: ANY DIMENSION OTHER THAN THOSE SHOWN QUOTED ON REQUEST

WHEN ORDERING SPECIFY:

| Quantity | Catalog Number | L | P |
|----------|----------------|----|--------|
| 3 | 5DT-H37 | 1" | .1620" |

| CATALOG NUMBER | D BODY DIAMETER | P INSIDE DIAMETER | L = LENGTH | |
|----------------|-----------------------|-------------------------|------------|-------|
| | | | 1 | 1 1/4 |
| 1DT-H43 | .4375 | .156 - .2009 | • | • |
| 2DT-H43 | .4375 | .201 - .248 | • | • |
| 3DT-H43 | .4375 | .2481 - .336 | • | • |
| 1DT-H50 | .500 | .156 - .2009 | • | • |
| 2DT-H50 | .500 | .201 - .248 | • | • |
| 3DT-H50 | .500 | .2481 - .336 | • | • |
| 1DT-H62 | .625 | .260 - .396 | • | • |
| 1DT-H75 | .750 | .3125 - .526 | • | • |
| 1DT-H87 | .875 | .375 - .590 | • | • |
| 1DT-H100 | 1.000 | .375 - .690 | • | • |

NOTE: ANY DIMENSION OTHER THAN THOSE SHOWN QUOTED ON REQUEST

WHEN ORDERING SPECIFY:

| Quantity | Catalog Number | L | P |
|----------|----------------|--------|--------|
| 2 | 3DT-H50 | 1 1/4" | .2520" |

ROUND

This catalog covers +.0002/+.0004" tolerance die components.
For +.00005/- .00000" tolerance die components, please refer to our precision catalog.