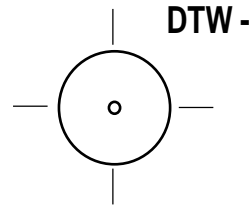
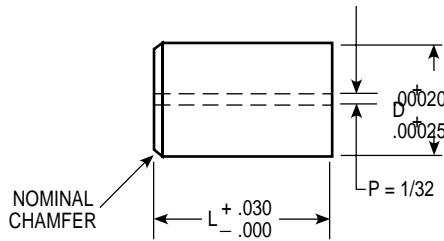


Carbide Die Inserts, Wire EDM Blanks With Starter Hole



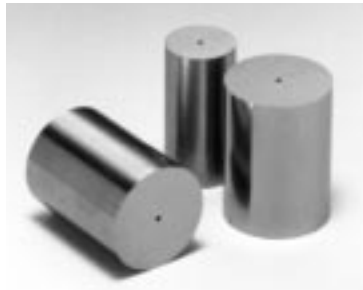
CATALOG NUMBER	D BODY DIAMETER	L = LENGTH	
		1"	1 1/4"
1DTW-18	.1875	•	•
1DTW-25	.250	•	•
1DTW-31	.3125	•	•
1DTW-37	.375	•	•
1DTW-43	.4375	•	•
1DTW-50	.500	•	•
1DTW-62	.625	•	•
1DTW-75	.750	•	•
1DTW-87	.875	•	•
1DTW-100	1.000	•	•

NOTE: ANY DIMENSION OTHER THAN THOSE SHOWN QUOTED ON REQUEST

WHEN ORDERING SPECIFY:

Quantity	Catalog Number	L
4	1DTW-31	1"

BRAZED MACHINABLE STEEL SLEEVE HEAD AVAILABLE



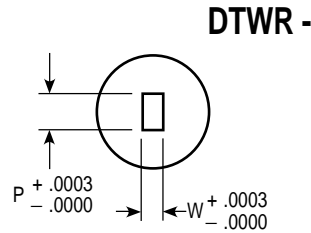
Please specify locating devices by the following designations:

DS = Dowel Slot = .125 Dia.

F1 = Single Flat $\left(\frac{D}{2} - .0625\right)$

F2 = Double Flat $\left(\frac{D}{2} - .0625\right)$

All locating devices will be parallel to the longest dimension. (See page ii.)
Special locations or devices will be furnished if fully dimensioned print is provided.

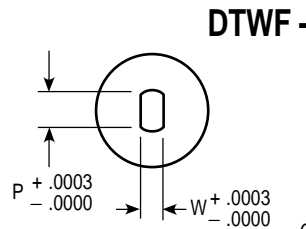


RECTANGLE (Including Square)

INTERNAL TAPER 0° 9' PER SIDE*
CORNER RADIUS = .007"
CONCENTRICITY O.D. AND I.D. .0003" T.I.R.

WHEN ORDERING SPECIFY:

Quantity	Catalog Number	L	Hole Size		Locating Device
			W	P	
7	1DTWR-87	1"	.130	.175	F1

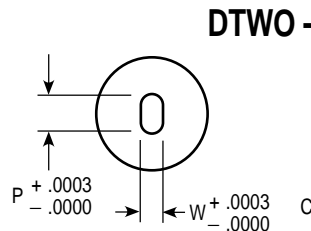


FLATTED ROUND

INTERNAL TAPER 0° 9' PER SIDE*
CORNER RADIUS = .007"
CONCENTRICITY O.D. AND I.D. .0003" T.I.R.

WHEN ORDERING SPECIFY:

Quantity	Catalog Number	L	Hole Size		Locating Device
			W	P	
5	1DTWF-87	1"	.205	.400	F1



OBLONG

INTERNAL TAPER 0° 9' PER SIDE*
CONCENTRICITY O.D. AND I.D. .0003" T.I.R.

WHEN ORDERING SPECIFY:

Quantity	Catalog Number	L	Hole Size		Locating Device
			W	P	
5	1DTWO-62	1 1/4"	.123	.300	F1