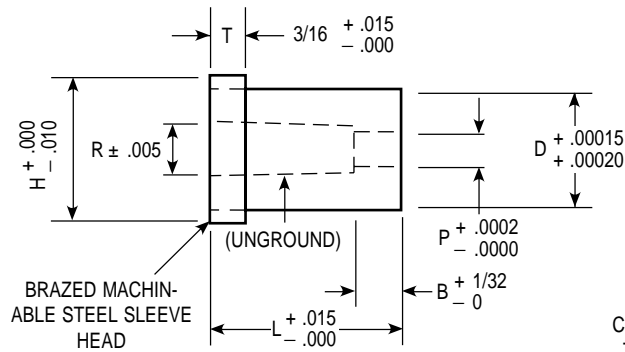


Carbide Die Inserts with Counterbore and Machinable Steel Sleeve Head



●
ROUND

CONCENTRICITY O.D. AND I.D., .0002" T.I.R.
TAPER IN "P," .0025" PER INCH PER SIDE

CATALOG NUMBER	D BODY DIAMETER	P INSIDE DIAMETER	R RELIEF DIAMETER	B LAND	H HEAD DIAMETER	L = LENGTH	
						1	1½
1DCS-18A	.1875	.052 - .0619	.080	1/8"	.296	•	•
1DCS-18B	.1875	.062 - .070	.090	1/8"	.296	•	•
2DCS-18A	.1875	.0701 - .077	.100	1/8"	.296	•	•
2DCS-18B	.1875	.0771 - .087	.108	3/16"	.296	•	•
3DCS-18A	.1875	.0871 - .092	.114	3/16"	.296	•	•
1DCS-25	.250	.052 - .0619	.080	1/8"	.340	•	•
1DCS-25A	.250	.062 - .070	.090	1/8"	.340	•	•
1DCS-25B	.250	.0701 - .077	.100	1/8"	.340	•	•
2DCS-25A	.250	.0771 - .087	.108	3/16"	.340	•	•
2DCS-25B	.250	.0871 - .092	.114	3/16"	.340	•	•
3DCS-25A	.250	.0921 - .108	.125	3/16"	.340	•	•
3DCS-25B	.250	.1081 - .124	.144	3/16"	.340	•	•
4DCS-25	.250	.1241 - .140	.159	1/4"	.340	•	•
1DCS-31A	.3125	.062 - .070	.090	1/8"	.400	•	•
1DCS-31B	.3125	.0701 - .077	.100	1/8"	.400	•	•
2DCS-31A	.3125	.0771 - .087	.108	3/16"	.400	•	•
2DCS-31B	.3125	.0871 - .092	.114	3/16"	.400	•	•
3DCS-31A	.3125	.0921 - .108	.125	3/16"	.400	•	•
3DCS-31B	.3125	.1081 - .124	.144	3/16"	.400	•	•
4DCS-31	.3125	.1241 - .140	.159	1/4"	.400	•	•
5DCS-31	.3125	.1401 - .180	.209	1/4"	.400	•	•
6DCS-31	.3125	.1801 - .195	.219	1/4"	.400	•	•
1DCS-37A	.375	.062 - .070	.090	1/8"	.460	•	•
1DCS-37B	.375	.0701 - .077	.100	1/8"	.460	•	•
2DCS-37A	.375	.0771 - .087	.108	3/16"	.460	•	•
2DCS-37B	.375	.0871 - .092	.114	3/16"	.460	•	•
3DCS-37A	.375	.0921 - .108	.125	3/16"	.460	•	•
3DCS-37B	.375	.1081 - .124	.144	3/16"	.460	•	•
4DCS-37	.375	.1241 - .140	.159	1/4"	.460	•	•
5DCS-37	.375	.1401 - .180	.209	1/4"	.460	•	•
6DCS-37	.375	.1801 - .195	.219	1/4"	.460	•	•

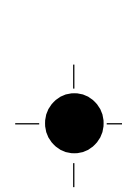
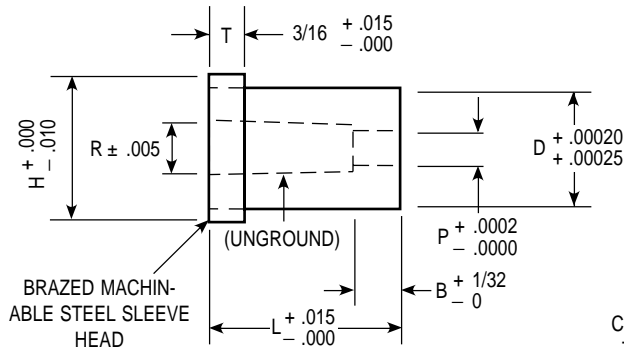


NOTE: ANY DIMENSION OTHER THAN THOSE SHOWN QUOTED ON REQUEST

WHEN ORDERING SPECIFY:

Quantity	Catalog Number	L	P
6	3DCS-31A	1"	.1000"

Carbide Die Inserts with Counterbore and Machinable Steel Sleeve Head



ROUND

CONCENTRICITY O.D. AND I.D., .0002" T.I.R.
TAPER IN "P," .0025" PER INCH PER SIDE

CATALOG NUMBER	D BODY DIAMETER	P INSIDE DIAMETER	R RELIEF DIAMETER	B LAND	H HEAD DIAMETER	L = LENGTH	
						1	1¼
1DCS-43	.4375	.156 - .200	.219	1/4"	.562	•	•
2DCS-43	.4375	.2001 - .248	.269	3/8"	.562	•	•
3DCS-43	.4375	.2481 - .300	.319	3/8"	.562	•	•
1DCS-50A	.500	.156 - .200	.219	1/4"	.625	•	•
2DCS-50	.500	.2001 - .248	.269	3/8"	.625	•	•
3DCS-50	.500	.2481 - .300	.319	3/8"	.625	•	•
1DCS-62A	.625	.260 - .310	.399	3/8"	.750	•	•
2DCS-62	.625	.3101 - .375	.399	3/8"	.750	•	•
3DCS-62	.625	.3751 - UP	.469	3/8"	.750	•	•
1DCS-75	.750	.3125 - .510	P + .02	3/8"	.875	•	•
1DCS-87	.875	.375 - .515	P + .02	3/8"	1.000	•	•
1DCS-100	1.000	.375 - .675	P + .02	3/8"	1.125	•	•

NOTE: ANY DIMENSION OTHER THAN THOSE SHOWN QUOTED ON REQUEST

WHEN ORDERING SPECIFY:

Quantity	Catalog Number	L	P
6	3DCS-50	1"	.2500"