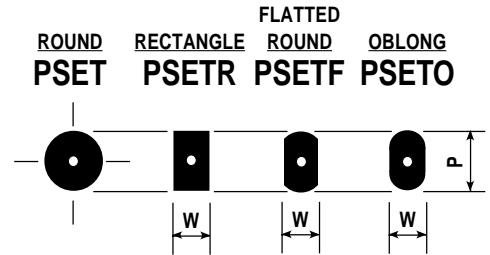
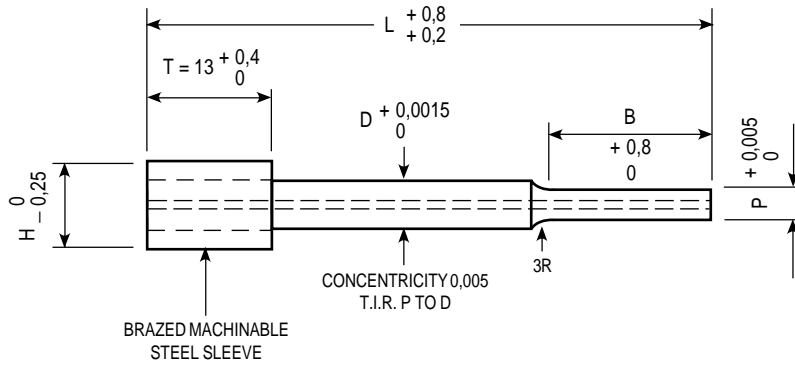


**METRIC**

# Carbide Punches with Air Hole and Machinable Steel Sleeve Head



CATALOG NUMBER	D DIAMETER	P POINT DIAMETER	B POINT LENGTH	H HEAD DIAMETER	L = LENGTH						
					AIR HOLE DIA.	50	60	70	80	90	100
1PSET-5M	5,0	2,50 - 5,00	20	8,00	1,2	•	•	•	•	•	•
1PSET-6M	6,0	2,50 - 6,00	20	9,00	1,2	•	•	•	•	•	•
1PSET-8M	8,0	4,00 - 8,00	22	11,00	1,2	•	•	•	•	•	•
1PSET-10M	10,0	7,00 - 10,00	22	13,00	2,8	•	•	•	•	•	•
1PSET-13M	13,0	10,00 - 13,00	22	16,00	3,6	•	•	•	•	•	•
1PSET-16M	16,0	11,00 - 16,00	22	19,00	3,6	•	•	•	•	•	•
1PSET-20M	20,0	15,00 - 20,00	22	23,00	3,6	•	•	•	•	•	•

NOTE: ANY DIMENSION OTHER THAN THOSE SHOWN QUOTED ON REQUEST

All outside corners to be sharp unless otherwise specified by customer.



**WHEN ORDERING SPECIFY:**

Quantity	Catalog Number	L	P
5	1PSET-5M	50	4,23

Quantity	Catalog Number	L	Point Dimensions
12	1PSETO-5M	50	W = 3,23 P = 4,23